

**ENGINEERING
AUTOMATION
CONSULTING**



PM
TECHNOLOGY
CONSULTING

ABOUT US

PM TECHNOLOGY CONSULTING S.r.l. is a company with many years of experience in the design and management of software for companies, from SMEs to multinational corporations. Our company is a leader in the field of Engineering, Management Software and 3D Design, Automation, Industry 4.0, Training and Consulting services.

For over 10 years the company has expanded and perfected its experience also in the field of Industrial Automation and instrumentation for the process control, leading it to excel in this sector, becoming a point of reference for all the most important national and international companies



- **ENGINEERING**
- **AUTOMATION**
- **CONSULTING**



ABOUT US

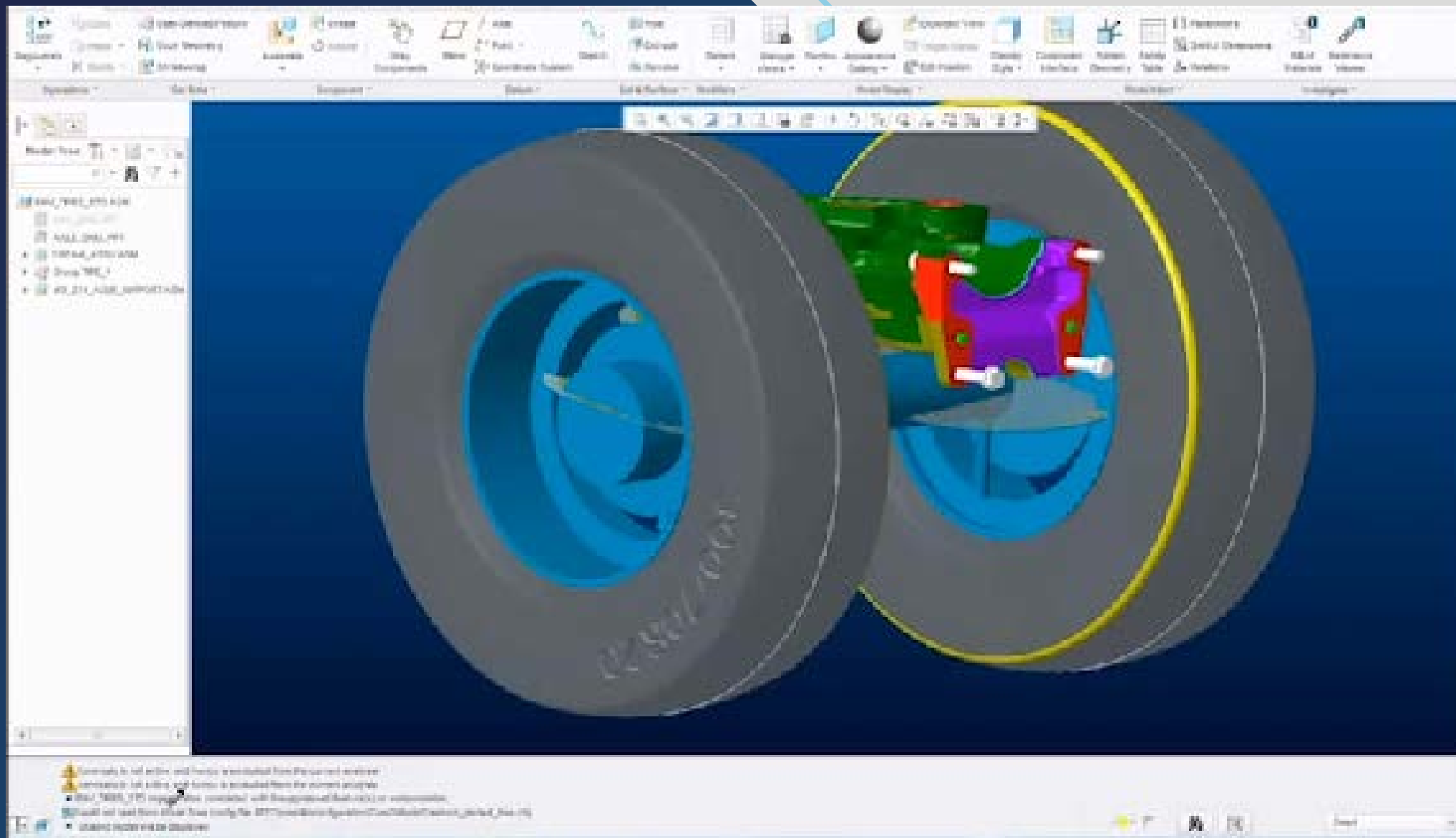
The great skills acquired in the twenty-year experience of consulting with major companies in the engineering field, in construction design using 3D design software and in the resale of software solutions with consolidated partnerships with the main distributors and producers of CAD, CAM, CAE programs and PLM, has allowed PM TECHNOLOGY CONSULTING to be able to maximize the convergence between the physical and digital worlds, by providing consulting and training services and thus achieving very important results with the most prestigious customers in the main industrial sectors.



ENGINEERING

PM TECHNOLOGY CONSULTING is particularly active in the field of mechanical design, industrial 3D design, prototype and reverse engineering, offering customers totally customized solutions.

The highly specialized technical staff is able to give quick and effective answers to the most demanding needs of the customer, during all the design and engineering phases of the requested products.



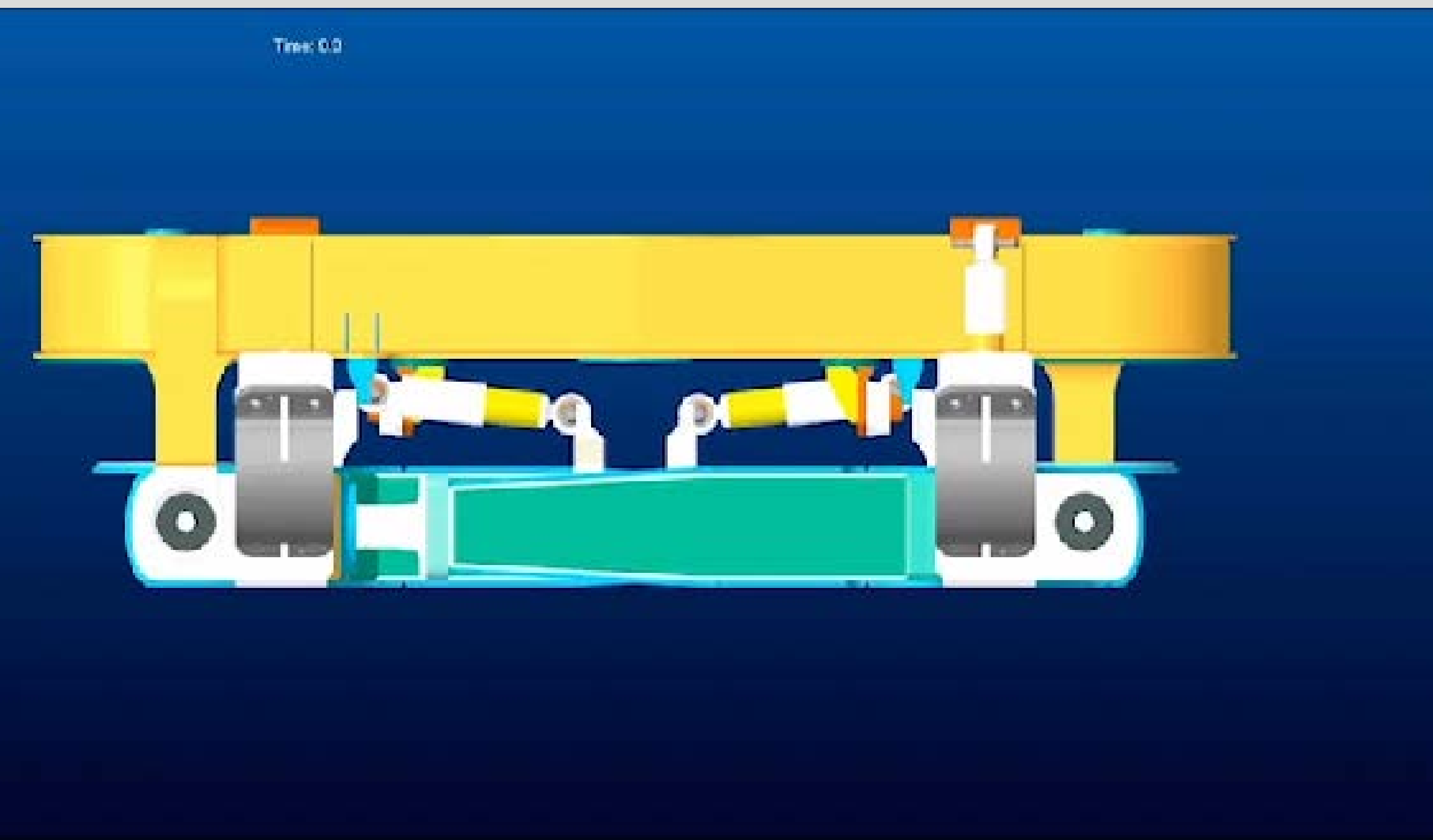


ENGINEERING

The experience of PM TECHNOLOGY CONSULTING is not limited to simply consulting in the engineering, prototyping or creation of an industrial design with an attractive aesthetic, but it does its utmost to give answers and solutions to all customer needs and to stimulate new possible strategic and productive visions through different steps, such as:

- Analysis and study of the product;
- Ergonomic studies and checks;
- Analysis of the possibilities of innovation and use of new technologies;
- Analysis of construction, marketing and investment needs of the customer.

Time: 0.0

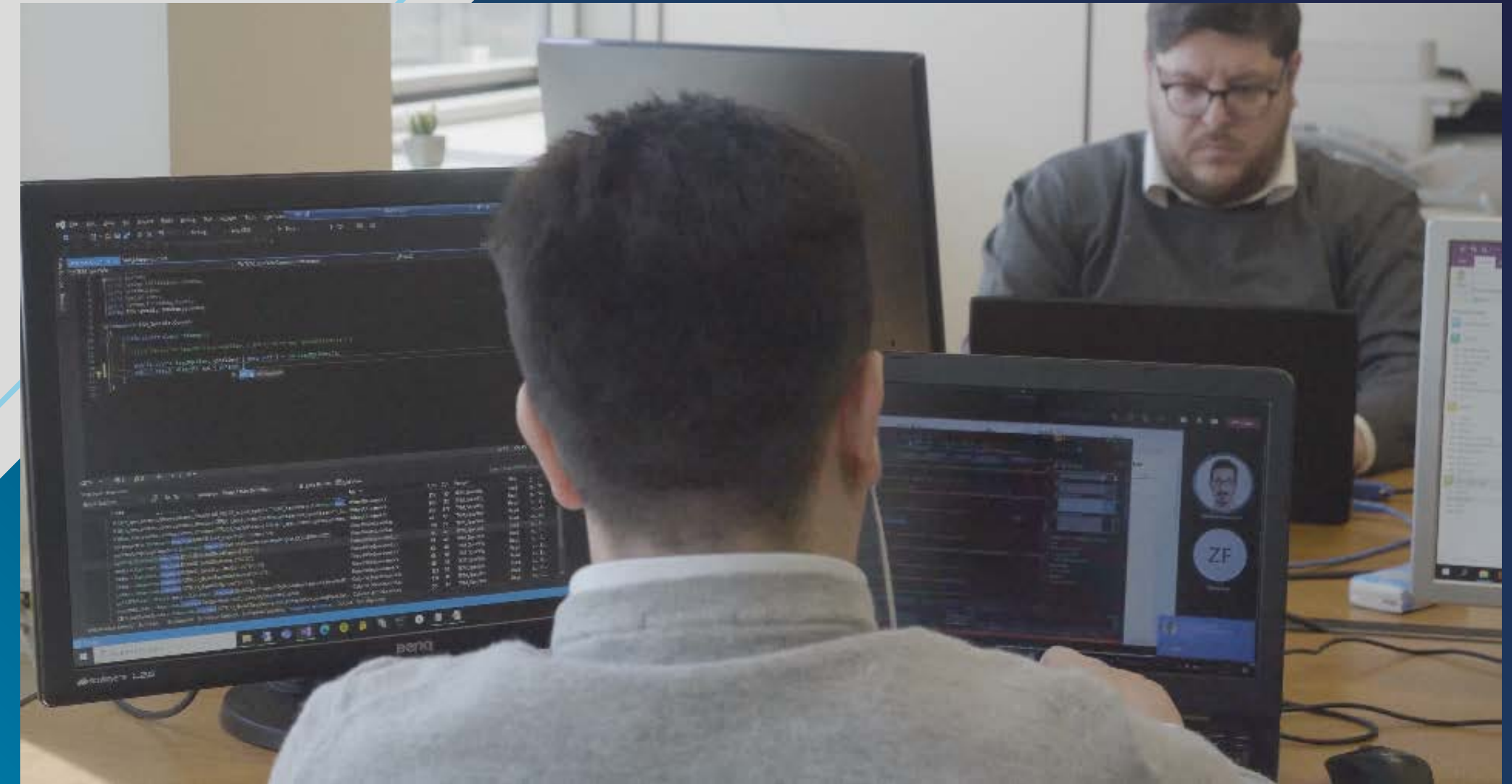
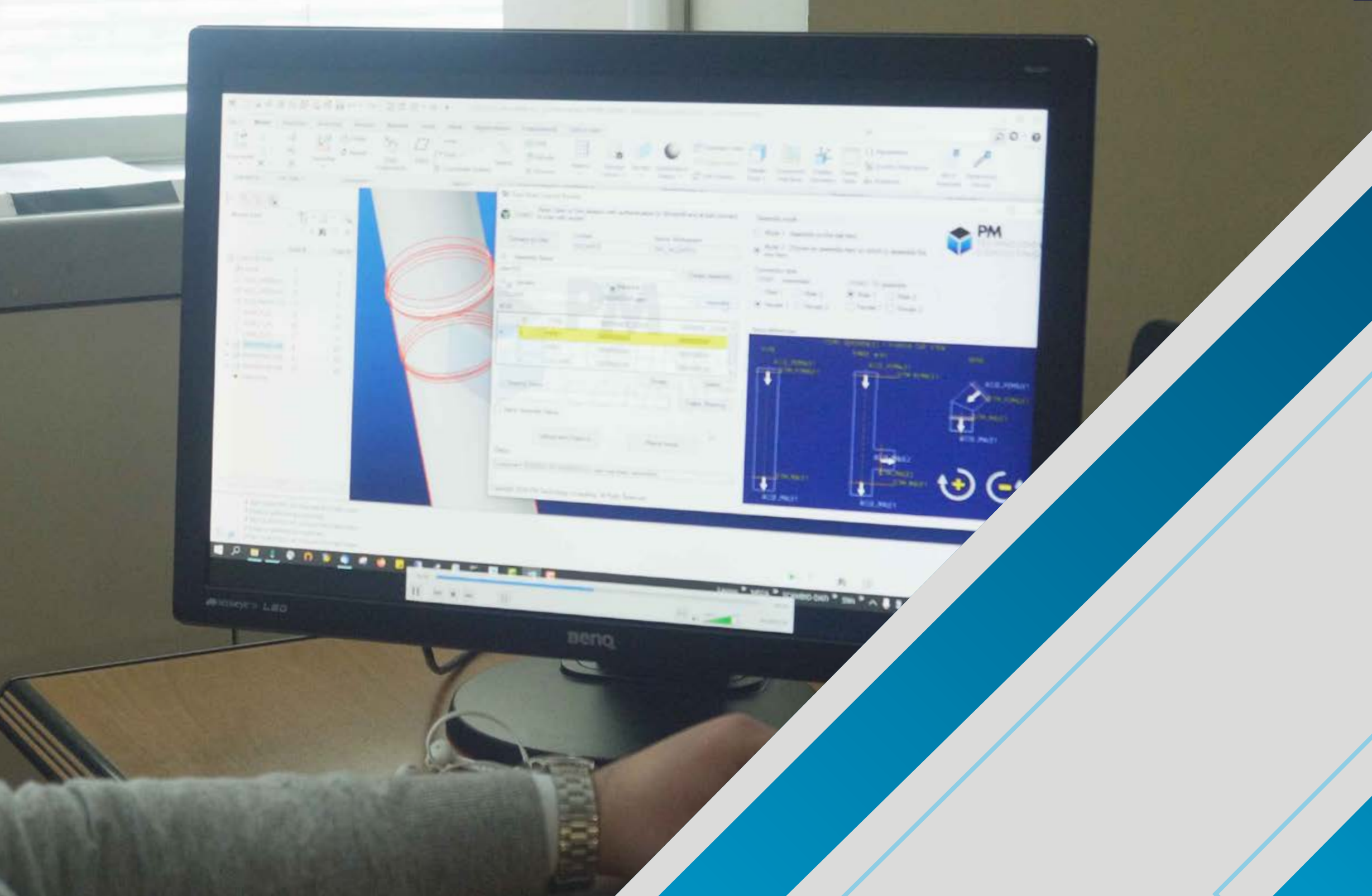


TRAINING & CONSULTING

Another field in which the company is highly operational is that of training and management and technical consultancy services. The experience and professionalism acquired by the staff of PM TECHNOLOGY CONSULTING are able to offer training courses for company personnel and professionals in the engineering sectors, in 3D CAD design and in the use of the latest generation company management software. At the request of customers, the PM TECHNOLOGY CONSULTING staff organizes training courses also at the company offices.

The great competence and ten-year experience gained by PM TECHNOLOGY CONSULTING professionals is always extremely accurate and dedicated, at the complete disposal of customers' needs, for all consulting and training services suitable for supporting companies in the field of automation, design, 3D Design and Reverse Engineering or in the implementation, maintenance and control of the most effective and latest generation company management systems, according to the different companies' needs.





MANAGEMENT SOFTWARE

The company creates Management Software to help customers in the continuous improvement of business processes. The services of realization, the implementation, the control and the improvement of the Business Management Software are executed according to the international standards, European and Italian, and are managed with constancy to ensure management tools customized to the specific requirements of the customer. Then, PM Technology Consulting also follows the customer in the Software maintenance actions and in the Product Life Cycle.

PROCESS AUTOMATION AND INDUSTRIAL INSTRUMENTS

In Automation and industrial instruments field, PM TECHNOLOGY CONSULTING deals with the Customization, Marketing, Distribution and sale - as well as technical support and start-up with training of company personnel - of the most advanced equipment and of the most important new generation system manufacturers, and is a reseller of Eurotherm products (Schneider Electric Group).



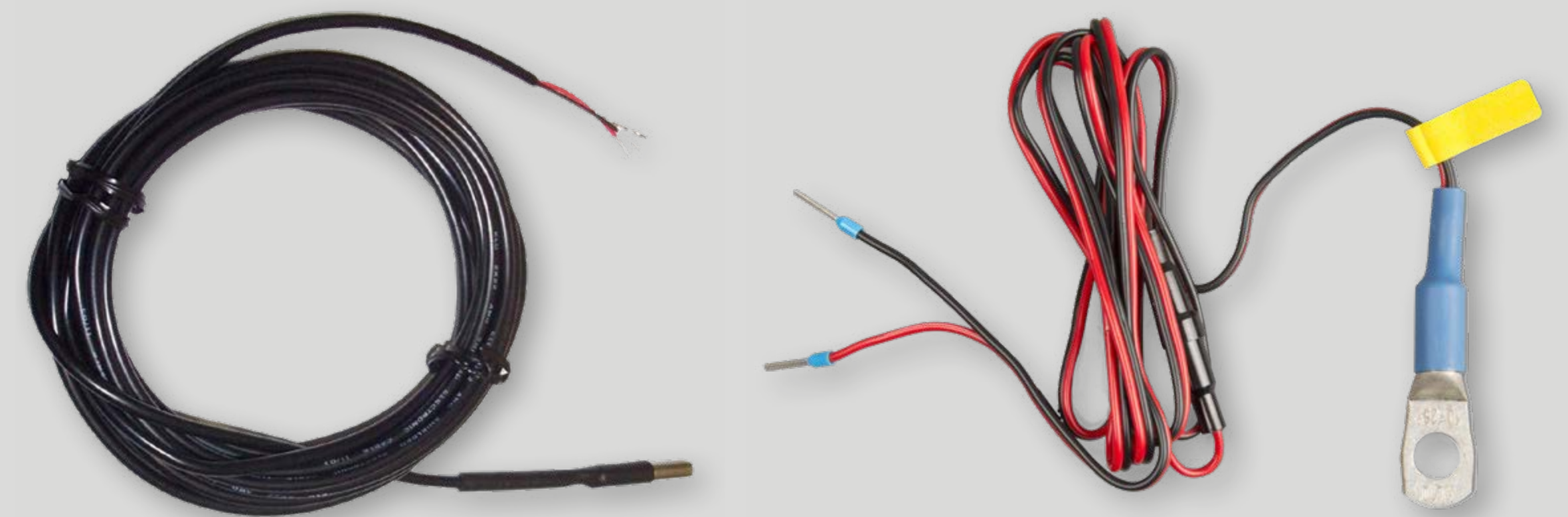


PROCESS AUTOMATION AND INDUSTRIAL INSTRUMENTS

PM TECHNOLOGY CONSULTING activity starts from the field and goes up to supervision and integration with the production process, offering a wide range of Automation Products such as:

FRONT PANEL INSTRUMENTATION - SYSTEMS

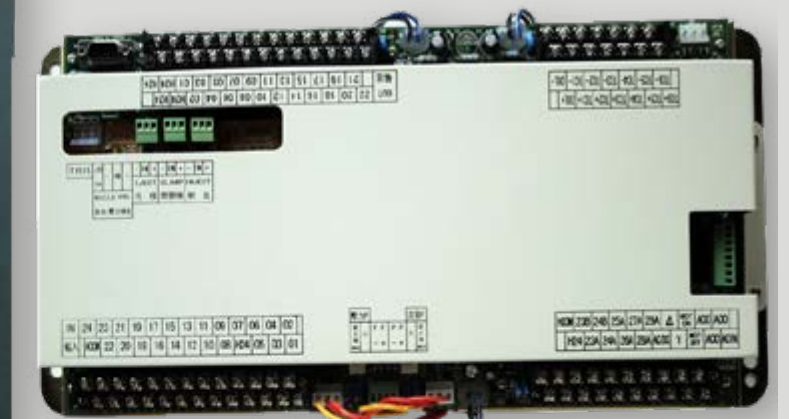
- Instrumentation for process regulation
- Programmers
- Process recorders
- Digital indicators and alarm displays
- Data acquisition systems



PROCESS AUTOMATION AND INDUSTRIAL INSTRUMENTS

BACK PANEL EQUIPMENT

- Voltage and current transformers
 - Electrical signal converters
 - "Switching" power supplies
 - Solid state relay - Static units - Inverter Drives
 - Electro-pneumatic converters
-
- PROBES AND SYSTEMS FOR TEMPERATURE CONTROL
 - Probes (TC, PT100 ...)
 - Probes for special applications
 - Thermal blankets



PROCESS AUTOMATION AND INDUSTRIAL INSTRUMENTS

FIELD INSTRUMENTATION

Process control

FIELD INSTRUMENTS

- Pressure, flow and level transmitter
- Flow switches, pressure switches, level switches, thermostats
- Temperature, humidity, ph, toxic gas detection probes
- Non-contact temperature measurement
- Capacitive, inductive ultrasound sensors
- Control valves, Solenoid valves
- Self-regulating and on-off valves

PORTABLE INSTRUMENTATION

- Equipment for measuring environmental and process parameters
- Ovens and calibrators for certifications
- Instrumentation certification
- Pressure and multifunction calibrator



Prysmian
Group



CLIENTS

Our Company always puts quality service and final customer satisfaction first. All our customers receive an exclusive advantage from our consultancy, thus, managing to perfect their instruments and customize them according to the most specific needs. Our core business is precisely that of dedicating the right time to the specific requests of each client to arrive at an exact customization of the components and software required.

HITACHI



CLIENTS

PM TECHNOLOGY CONSULTING offers its wide range of services to many client companies operating in the most diversified fields:

- The RAILWAY field (HITACHI RAIL STS - ANSALDOBRED A) an area in which the staff of PM TECHNOLOGY CONSULTING has dedicated itself over the years to the design of the trolley, of the braking system and anti-roll bar, of the body and of the systems and equipment, while also actively collaborating with well-known industries of the sector, such as HITACHI RAIL STS and ANSALDOBRED A, in the construction of high-speed trains (ETR700, ETR100) underground and massive local transport (METRO MILANO, CIRCUMVESUVIANA, CARAVAGGIO ROCK).
- The ENERGY field (ENEL X - ENEL GREEN POWER);
- AUTOMOTIVE (FCA / STELLANTIS) to INDUSTRIAL (PRYSMIAN - CANDY);
- AEROSPACE & DEFENSE (LEONARDO) to HEAVY EQUIPMENT and INDUSTRIAL AUTOMATION (Prysmian, Seda, Ecobat).





OUR PRODUCTS





3204i, – Accurate indication of temperature and process measurements

The Eurotherm range of 3200i indicators offer accurate indication of temperature and process measurements. Process interlocks, including overtemperature furnace limits, are implemented using relay output channels.



3208 temperature / process controllers

The innovative 3200 series of controllers offers precision in temperature control and other process variables along with advanced features hardly available in this class of controllers.



3216, – Accurate indication of temperature and process measurements

The Eurotherm range of 3200i indicators offer accurate indication of temperature and process measurements. Process interlocks, including overtemperature furnace limits, are implemented using relay output channels.



32h8i, – Accurate indication of temperature and process measurements

The Eurotherm range of 3200i indicators offer accurate indication of temperature and process measurements. Process interlocks, including overtemperature furnace limits, are implemented using relay output channels.



6100E - 6-channel Videographic Recorder with Ethernet Communication

Eurotherm excellence in an essential solution to meet simple data management needs.



AeroDAQ 6180 (AMS2750E)

AMS2750E is forcing aerospace companies to adopt rigorous furnace maintenance procedures. AeroDAQ is a solution designed to simplify compliance with aerospace industry standards.



Dissolved Oxygen Analyzer 873DO

- Dual Sensor Input
- Low-Cost Analyzer
- ¼ DIN NEMA 4X Housing



873CC Conductivity & Resistivity Analyzers | 873RS | 875CR

The 875CR is a highly accurate instrument that can be used with both Foxboro 871CR sensors and 871CC sensors. The 875CR can be used for both conductivity and resistance measurements. The 873CC and 873RS analyzers are basic, 1/4 DIN instruments dedicated to conductivity (873CC) or resistance (873RS). They are used with Foxboro 871CC sensors only. Both Series 875 and 873 accept one or two sensor inputs. They provide local indication, two alarm relays and two analog outputs.



Bayonet

Use in the Plastic Sector, low cost, temperature limits based on the cable used

Calibration: J, K, Single or Double element.

Stainless steel spring 300 mm. Tip dm. 6 × 15, 6 × 35, 6 × 40, 8 × 10, 8 × 20

Fittings with 1/4 gas pitch, 12MB, 12MC.

Cable length in mt. 1,2,3,4,5.

Hot junction: Isolated or grounded.



Bridge - Visualization software

Bridge is a powerful yet easy-to-use software package that provides access to networked 5000 Series and 6000 Series instruments from any PC anywhere in the world. With the correct security access, the user can view any number of 5000 and 6000 Series instruments networked via LAN, dial-up connection, intranet or Internet.



Data Reviewer

Eurotherm Data Reviewer allows you to view, analyze, print and share historical data files, how and when you want.

The Auditor option provides a complete audit trail for annotations and information on the incident, with user authentication and electronic signatures to facilitate the attribution, integrity and confidentiality of the source data.



Dream Report

Eurotherm's Dream Report™ software is an integrated reporting solution for industrial automation. It was designed to be the simplest solution to extract data from almost any source and automatically generate reports, for any user in any location. Built using modern technologies, Dream Report software is perfectly suited to any batch and continuous process application.



EFit SCR Power Regulator

Simple to integrate, get started and competitively priced, the EFit power controller delivers uncompromising control for infrared and resistive heating elements.



EPack TM Compact SCR Power Controller

The EPack Power Controller is a compact power unit; it combines high levels of configurability and functionality with operational and set-up simplicity.



ESwitch Power Switch

ESwitch is an interesting solution to solve this problem. Because the contact is electronic, the lifetime is significantly extended. Its wiring is as simple as for a mechanical contactor and the mounting is very easy: just clip it on a DIN rail! It features a broad range of AC and DC command signals with a front face LED to display the input status to help commissioning and diagnostics.



Eurotherm iTools

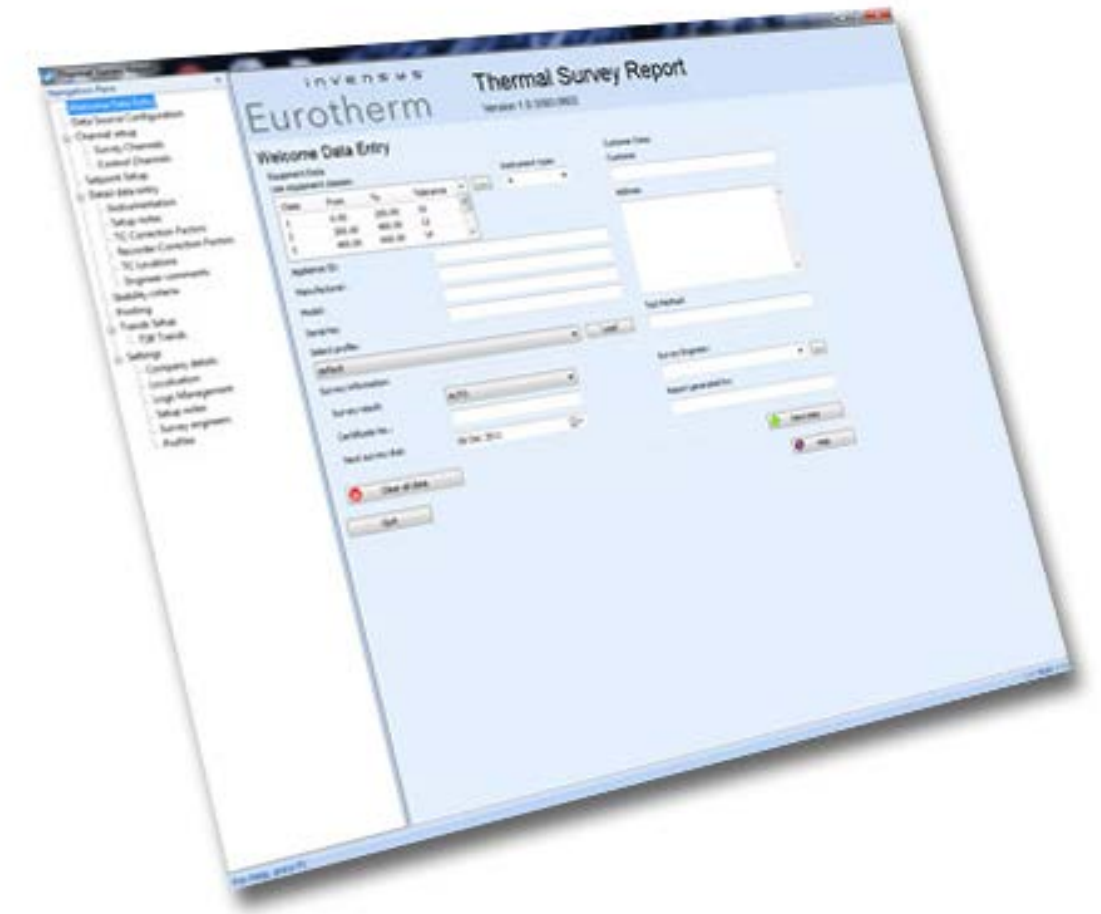
Eurotherm iTools is a suite of software tools for configuring and monitoring Eurotherm temperature and process controllers, power controllers and recorders



Eurotherm Wonderware PAC software

Comprehensive, Fast Integration, Helps Reduce CAPEX and OPEX.

As industrial processes evolve to take advantage of Industry 4.0 technologies, process control systems often need the capability and flexibility to connect into wider plant and business level systems.



Automatic TUS report generator

Automatic thermal uniformity check report generation, part of AMS2750E pyrometric compliance

Thermal Uniformity Check Reports are a mandatory part of AMS2750E pyrometric compliance, and the content and format of the report are clearly stated in the specification



nanodac™ Recorder / Controller

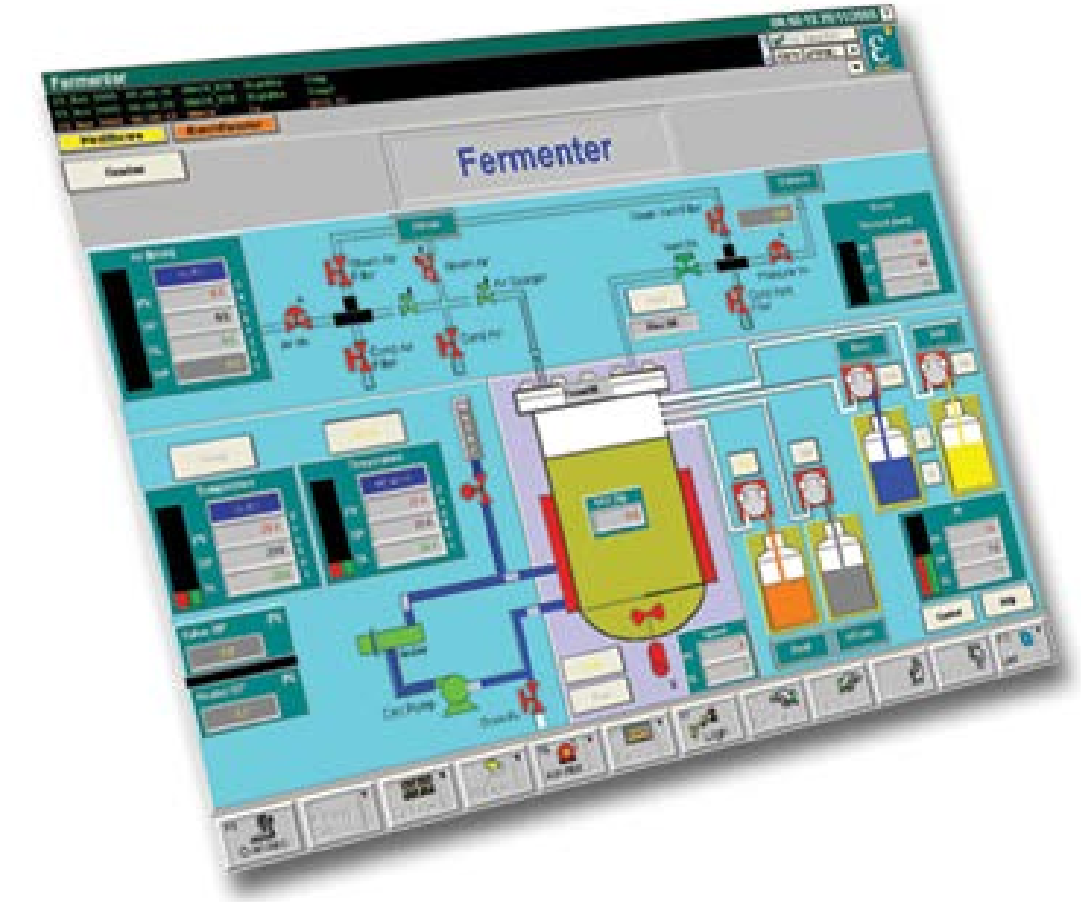
The nanodac™ recorder / controller offers the ultimate, given its size, in terms of videographic recording and PID control. It is a compact 1/4 DIN panel mount unit that has 4 high accuracy universal inputs for data recording and PID control. It is a tool for the safe recording of data with accurate control, enhanced by a 1/4 VGA color display that offers the operator an incredibly clear interface even on the smallest machines



OPC Servers and I/O Drivers

OPC server for:

- Modbus devices
- LIN devices
- I / O driver
- Intellution FIX32 and iFIX
- Wonderware® SuiteLink™ protocol
- Includes advanced communications monitoring and diagnostics tools



Operation Server and Viewer

The structure of the Operations Server and Viewer software is presented as a client / server architecture with specialized interfaces for a fast and efficient transfer of alarms and data, in real time, from the control nodes to the HMI pages. Operations Server provides a direct connection to the control network that supports serial, Ethernet TCP / IP and ARCnet connections. Control network protocol support includes Eurotherm's LIN and Modbus.

**PROJECT REALIZED THANKS TO THE CO-FINANCING OF THE EUROPEAN UNION, THE
ITALIAN STATE AND THE CAMPANIA REGION, IN THE SCOPE OF THE POR CAMPANIA
FESR 2014-2020**



**EXPO
2020
DUBAI
UAE**



PM
TECHNOLOGY
CONSULTING

